



HOKKAIDO
UNIVERSITY



HOKKAIDO
SUMMER
INSTITUTE

Hokkaido Summer Institute 2021

June – October 2021 at Hokkaido University, Sapporo, Japan
Summer Courses offered by the

*Faculty / Graduate School / School
Of
Humanities and Human Sciences*

文学部

School of Humanities and Human Sciences

*Online application will be open:
February 1~15, 2021*

For Further Information visit HSI website...
<https://hokkaidosummerinstitute.oia.hokudai.ac.jp/>

*Check the HSI website with this QR code!

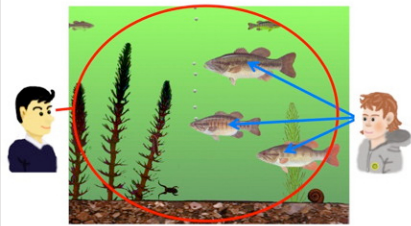


8 Courses offered by the School / Graduate School of Humanities and Human Sciences

U 004 Cognitive Science Frontiers in Cultural Psychology 2021

For Undergraduate Students

June 28 – July 2



This course presents an introduction to a number of topics in experimental cultural psychology, as well as research relevant to some of the major problems in this field.

Takahiko MASUDA

Professor, Department of Psychology,
University of Alberta, Canada

Sawa SENZAKI

Associate Professor, Human Development and
Psychology Departments, University of Wisconsin-
Green Bay, USA

Masaki YUKI*

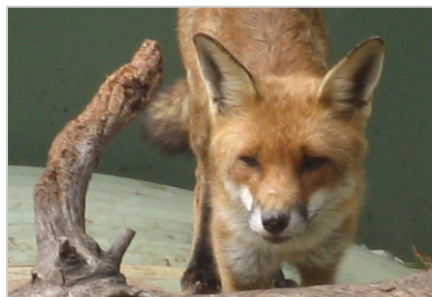
Professor, Laboratory of Behavioral Science,
Division of Human Sciences



Takahiko MASUDA

U 021 Social Ecology Principles of Invasion Ecology 2021

August 30 – September 3



The course will cover how plants and animals become invasive, the economic, social and environmental damage they cause, and the population dynamics of invasion. This will include examples from Japan, New Zealand and around the world.

AI GLEN

Researcher, Landcare Research
(Wildlife Ecology & Management), New Zealand

Tohru IKEDA*

Professor, Laboratory of Regional Sciences,
Division of Human Sciences



AI GLEN

U 026 Seminar in Archaeology Plants, People and Indigeneity in Japan 2021

October 11 – October 16



This course focuses on the long-term plant use in Hokkaido. Also, we aim to present current issues of indigenous human rights in Hokkaido and the similarities in history of colonization and technologies for agriculture between Hokkaido and North America.

Gary William CRAWFORD Professor, Department of Anthropology,
University of Toronto, Canada

Jeffry Joseph GAYMAN Professor, Research Faculty of Media and
Communication and School of Education,
Hokkaido University

Katsunori TAKASE* Associate Professor, Laboratory of Archaeology,
Division of Humanities



Gary William CRAWFORD

Application Period & Deadline

Online Application will start on February 1st. Monday from 12:00 (JST)
Please visit HSI2021 official website for online application and further details.
https://hokkaidosummerinstitute.oia.hokudai.ac.jp/applications/signup_login.html

	Application Period	Deadline	Courses Available	Course number
Early Application	February 1 – February 15	2/15 Monday 17:00 JST	All courses	U004, U021, U026, G026, G096, G109, G119, G125
2nd Application	March 29 – April 9	4/9 Friday 17:00 JST	Courses starting on or after July 1	U021, U026, G096, G109, G119, G125
3rd Application	May 24 – June 4	6/4 Friday 17:00 JST	Courses starting on or after September 1	U026, G109, G119, G125

Online Course or On-Campus Course

Online Course: Offered only online.

Online or On-Campus Course: Offered both online and at lecture room inside Sapporo campus.

On-Campus Course: All participants are required to come to Japan and take them face-to-face.

However, some of the courses may be changed to online courses if the on-campus option becomes unavailable due to COVID-19.

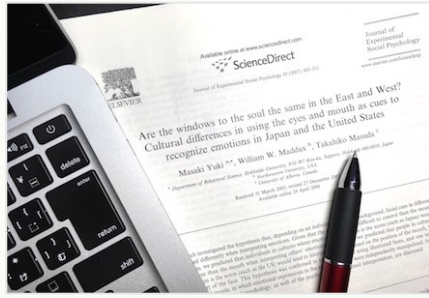
Online	Online or On-Campus	On-Campus	If On-Campus became unavailable Offered Online
G096, G109	U021, G119	U004, U026, G026, G125	U004, U021, G026, G096, G109, G119, G125

G
026

Academic Paper-Writing Workshop for Cultural and Social Psychological Journals 2021

For Graduate Students

June 28 – July 2



This course is designed to improve psychology graduate students' English writing skills for academic papers.

Takahiko MASUDA

Professor, Department of Psychology,
University of Alberta, Canada

Sawa SENZAKI

Associate Professor, Human Development and
Psychology Departments, University of Wisconsin-
Green Bay, USA

Masaki YUKI*

Professor, Laboratory of Behavioral Science
Division of Human Sciences

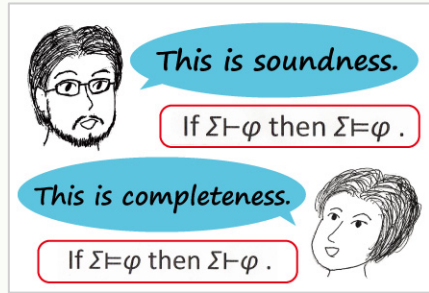


Takahiko MASUDA

G
096

Logic (Seminar) Introduction to Logic 2021

August 30 – September 3



Logic is a basic tool for evaluating a reasoning. A given reasoning may be evaluated in terms of truth of a sentence or correctness of the use of logical vocabulary. From these two perspectives, this course provides basics of propositional, first-order and modal logics.

Katsuhiko SANO*

Associate Professor, Laboratory of Philosophy and
Ethics, Division of Humanities

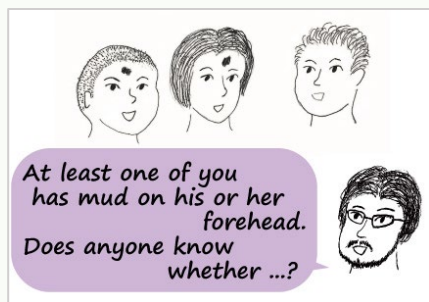


Katsuhiko SANO

G
109

Philosophy (Lecture) Topics in Applied Modal Logic 2021

September 6 – September 10



Modal logic can be applied to analyze various phenomena. For example, one of the most well-known applied modal logic is dynamic epistemic logic, which can deal with dynamic changes in the cognitive states of agents brought about by their interactions.

Jeremy Michael SELIGMAN Senior Lecturer, Faculty of Arts,
The University of Auckland, New Zealand

Tomoyuki YAMADA

Professor emeritus, Hokkaido University

Katsuhiko SANO*

Associate Professor, Laboratory of Philosophy and
Ethics, Division of Humanities

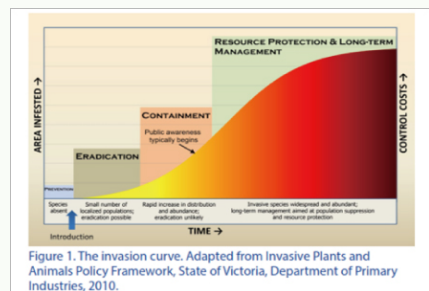


Jeremy Michael SELIGMAN

G
119

Regional Sciences General Theory of Invasive Alien Species Management 2021

September 6 – September 10



The course will cover principles, legislation, control tools and technologies, and strategies for controlling and eradicating Invasive Alien Species (IAS), illustrated with examples of management from Japan, New Zealand and around the world.

Phil COWAN

Research Associate, Landcare Research
(Wildlife Ecology & Management), New Zealand

Tohru IKEDA*

Professor, Laboratory of Regional Sciences,
Division of Human Sciences

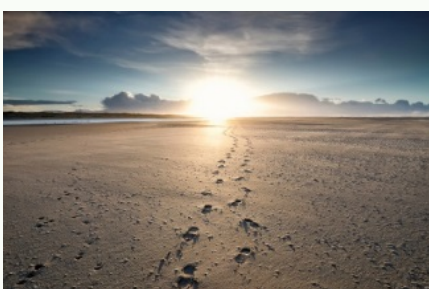


Phil COWAN

G
125

Special Lecture of Sociology Contemporary Sociology of Religion and Spirituality

September 27 – September 30



Covering various parts of the world, this course explores current social theories of religion at the micro, meso, macro, and cyber levels.

Adam POSSAMAI

Professor, School of Social Sciences and Psychology,
Western Sydney University, Australia

Yohsihide SAKURAI*


Professor, Laboratory of Sociology,
Division of Human Sciences



Adam POSSAMAI



Faculty of Humanities and Human Sciences
Graduate School of Humanities and Human Sciences
School of Humanities and Human Sciences

- 
- Collaboration with world-leading researchers and HU faculty members
 - Special programs you can experience only in Sapporo
 - Spend a pleasant and comfortable summer in Hokkaido
 - Tuition Fee is Free for students of HU's partner institutions

*More Information about
the Faculty of Humanities and Human Sciences, Hokkaido University:*

<https://www.let.hokudai.ac.jp/en/>