

Experience an Academic Summer at Hokkaido University

UG

Seminar in History and Anthropology Pacific Music Festival 2016: Art, Politics, and Economy

July 19 - July 26

Introduction to the field of cultural studies by using the Pacific Music Festival, an international music festival held annually in Sapporo, as a case study and also by visiting Shiraoi Ainu Museum as an inspirational experience.

Mari YOSHIHARA

Professor, Department of American Studies, University of Hawai'i at Mānoa, U.S.A.

Eijun SENAHA

Professor, Department of Western Literature, Graduate School of Letters, Hokkaido University

Yujin YAGUCHI

Professor, Graduate School of Arts and Sciences, The University of Tokyo, Japan



Mari YOSHIHARA



UG

Seminar in History and Anthropology History of U.S. Social Movements for Peace, Freedom and Justice

July 18 - July 22

This seminar examines from a global perspective the history of U.S. social movements for peace, freedom and justice, which have been practiced under the banner of antiwar, labor, women's rights, antiracism, etc.

Robin D.G. KELLEY

Professor, History & Gary B. Nash Endowed Chair in United States History, University of California Los Angeles, U.S.A.

Katsuyuki MURATA

Professor, Department of History and Anthropology, Graduate School of Letters, Hokkaido University



Robin D.G. KELLEY



UG

Cultural Psychology Frontiers in Cultural Psychology 2016

June 27 - June 29

This course presents an introduction to a number of topics in experimental cultural psychology, as well as research relevant to some of the major problems in this field.

Takahiko MASUDA

Associate Professor, Department of Psychology, University of Alberta, Canada

Masaki YUKI

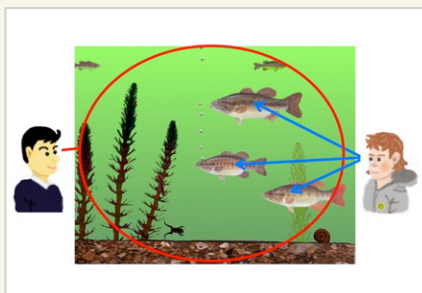
Professor, Department of Behavioral Science, Graduate School of Letters, Hokkaido University

Susumu OHNUMA

Associate Professor, Department of Behavioral Science, Graduate School of Letters, Hokkaido University



Takahiko MASUDA



G

Introduction to Brain Science VI The Foundations of Cognitive Sciences

July 4 - July 8

Learn recent studies and methods in the diverse research fields, including cognitive psychology, brain science, and cognitive robotics, to elucidate how our brain and mind works.

Peter Ford DOMINEY

Director of Research, Stem Cell & Brain Research Institute, Institut National de La Sante Et de La Recherche Medicale (INSERM), France

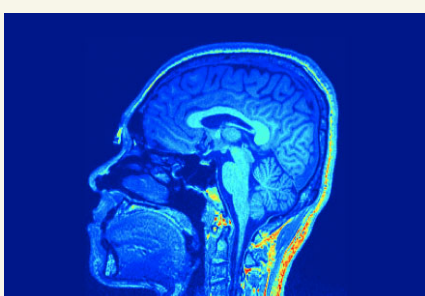
Kenji OGAWA

Associate Professor, Department of Psychology, Graduate School of Letters, Hokkaido University

Yasuhiro KAWABATA, Makiko NAKA, Mayumi ADACHI, Jun-ichiro KAWAHARA, Masanobu UEDA Hokkaido University



Peter F. DOMINEY



8 Courses offered by the Graduate School of Letters/Faculty of Letters

- Collaboration with world-leading researchers and HU faculty members
- Special programs you can experience only in Sapporo
- Spend a pleasant and comfortable summer in Hokkaido

Updated date : Feb 04, 2016

G

Logic Introduction to Logic

July 25 - July 29

Students will be guided into the realm of contemporary logic (especially, propositional logic, first order logic, and modal logic), and learn what formulas, truth, validity, inferences, proofs, soundness, and completeness are. No prior knowledge of logic is assumed.

- Tomoyuki YAMADA** Professor, Department of Philosophy, Graduate School of Letters, Hokkaido University
- Koji NAKATOGAWA** Professor, Department of Philosophy, Graduate School of Letters, Hokkaido University
- Yasushi NOMURA** Assistant Professor, Department of Philosophy, Graduate School of Letters, Hokkaido University



Tomoyuki YAMADA



This is soundness.

If $\Sigma \vdash \varphi$ then $\Sigma \models \varphi$.

This is completeness.

If $\Sigma \models \varphi$ then $\Sigma \vdash \varphi$.



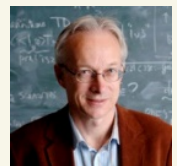
G

Contemporary Philosophy Dynamic Epistemic Logic and its Applications

August 1 - August 5

Dynamic epistemic logic deals with dynamic changes in the cognitive states of agents brought about by their interactions. We discuss the model updating techniques that make this possible, the resulting logics, and their applications to other branches of logic.

- Johan VAN BENTHEM** Professor, Department of Philosophy, Stanford University, U.S.A./ University Professor Emeritus of pure and applied logic, University of Amsterdam, Netherlands
- Tomoyuki YAMADA** Professor, Department of Philosophy, Graduate School of Letters, Hokkaido University
- Alexandru BALTAG** Associate Professor, Institute for Logic, Language & Computation (ILLC), University of Amsterdam, Netherlands
- Sonja SMETS** Associate Professor, ILLC, University of Amsterdam, Netherlands
- Koji NAKATOGAWA, Yasushi NOMURA** Hokkaido University



Johan VAN BENTHEM



At least one of you has mud on his or her forehead. Does anyone know whether ...?



G

Phenomenology of Reason Dialogue with Japanese Philosophy

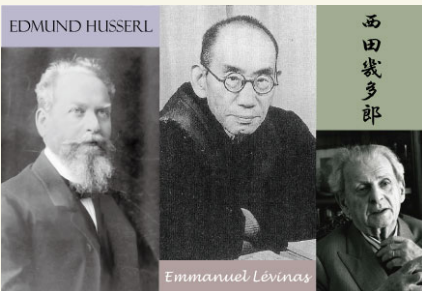
August 1 - August 5

This course aims at exploring the phenomenological and ethical conceptions of reason in Husserl and Levinas in contrast with the respective approaches of two Japanese philosophers, Nishida and Tanabe.

- Nicolas DE WARREN** Professor, Director of Husserl-Archives: Centre for Phenomenology and Continental Philosophy, KU Leuven, Belgium
- Shigeru TAGUCHI** Associate Professor, Department of Ethics and Applied Ethics, Graduate School of Letters, Hokkaido University
- Andrea ALTOBRANDO** Researcher, University of Padova, Italy
- Ching-yuen CHEUNG** Lecturer, Department of Japanese Studies, The Chinese University of Hong Kong, China



Nicolas DE WARREN



Emmanuel Levinas/Bracha L. Ettinger CC BY-SA 2.5

G

Research Ethics

June 6 - June 22 → June 27 - July 13

The purpose of this class is to provide basic ideas and skills ethically to conduct research and other research-related activities. Students are expected to acquire those ideas and skills through case studies and group discussion.

- Shunzo MAJIMA** Associate Professor, Center for Applied Ethics and Philosophy, Graduate School of Letters, Hokkaido University



Shunzo MAJIMA

RESEARCH ETHICS